

# Namibia



LEVIEV  
... LGC ...  
GROUP OF COMPANIES

*LL Biofuels Namibia (Pty) Ltd*  
*Lev Leviev Biofuels Namibia (Pty Ltd)*

A Quest for partnership

March 2010

**L.L.BIOFUEL**

**Tel: +264-61386100**

**Fax: +264-61249253**

P.O. Box 3498  
7 Ruhr Street  
Northern Industrial  
Windhoek, Namibia



# L.L.Biofuel: Business plan



LEVIEV  
... LGC ...  
GROUP OF COMPANIES

## 1 L.L.BIOFUEL

## 2 INTRODUCTION

1. Organisational Structure
2. Food & Oil Production
3. Shareholders, Stakeholders



## 3 PROJECT ASSUMPTION

1. Location
2. Why Namibia? Why the Caprivi?
3. Objectives of The Project



## 4 PROJECT IMPLEMENTATION

1. Phase One
2. Phase Two
3. Phase Three
4. Phase Four
5. Phase Five



# L.L.Biofuel: Business plan



LEVIEV  
... LGC ...  
GROUP OF COMPANIES

## 5 FINANCIAL PLAN

1. Capex
2. Opex
3. Expected Income
4. Financial Analysis



## 6 MARKETING PLAN

1. Food & Oil marketing



## 7 BENEFITS TO NAMIBIA

1. Political
2. Economic
3. Social

## 8 SCIENTISTS SUPPORTING THE PROJECT

1. Ecologists
2. Scientist



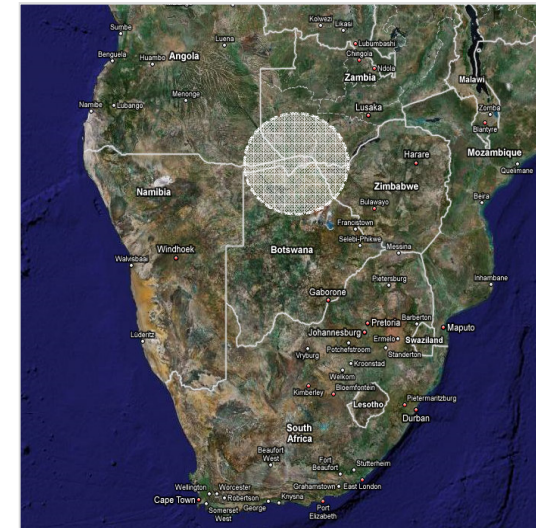
# 1 L.L.BIOFUEL NAMIBIA



LEVIEV  
... LGC ...  
GROUP OF COMPANIES

## Food & Oil

- High value Food production
- 2<sup>nd</sup> generation oil crops



The Caprivi region:

**The Green Basket of Namibia**



## 2.1 L.L.Biofuel Namibia



L.L. BIOFUEL  
NAMIBIA

Food  
crops

Oil  
crops

Consults:  
Experts  
From  
Israel



Consults:  
Experts  
From  
India



Vegetables  
Fruits

Food  
Factory

Honey

grains

Pork farm

Fish farm

Castor  
oil

Jatropha  
oil

## 2.2 Food & Oil production



LEVIEV  
... LGC ...  
GROUP OF COMPANIES

- Onion
- Potato
- Maize
- Cabbage
- Banana
- Jatropha oil
- Castor oil
- Tomato
- Pepper
- Sweet potato
- Apples
- Oranges
- Sweet melon
- Water melon
- Carrot
- Lettuce
- Cucumber
- Wheat
- Millet
- Leguminous



### ➤ Food Factory



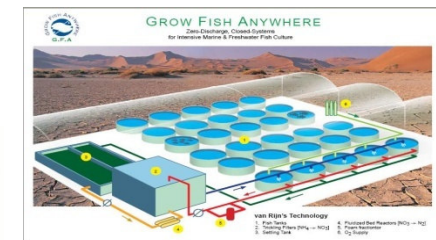
### ➤ Honey



### ➤ Pork farm



### ➤ Fish farm



## 2.3 Shareholders & Stakeholders



LEVIEV  
... LGC ...  
GROUP OF COMPANIES

*LL Biofuels Namibia (Pty) Ltd*  
*Lev Leviev Biofuels Namibia (Pty) Ltd*

**Part of The Leviev Group Companies (L.G.C)**

**Experience and knowledge in establishing agricultural projects for food & oil crops in Namibia and additional African countries.**

<http://www.thelevievgroup.com>

### **Stakeholders:**

1. THE COMMUNITY OF THE CAPRIVI REGION
2. MINISTRY OF AGRICULTURE, WATER AND FORESTRY--
3. MINISTRY OF ENVIRONMENT AND TOURISM
4. CAPRIVI REGIONAL COUNCIL
5. KATIMA MULILO TOWN COUNCIL
6. NATIONAL YOUTH SERVICE
7. TRADITIONAL AUTHORITIES

### 3 Project Assumption



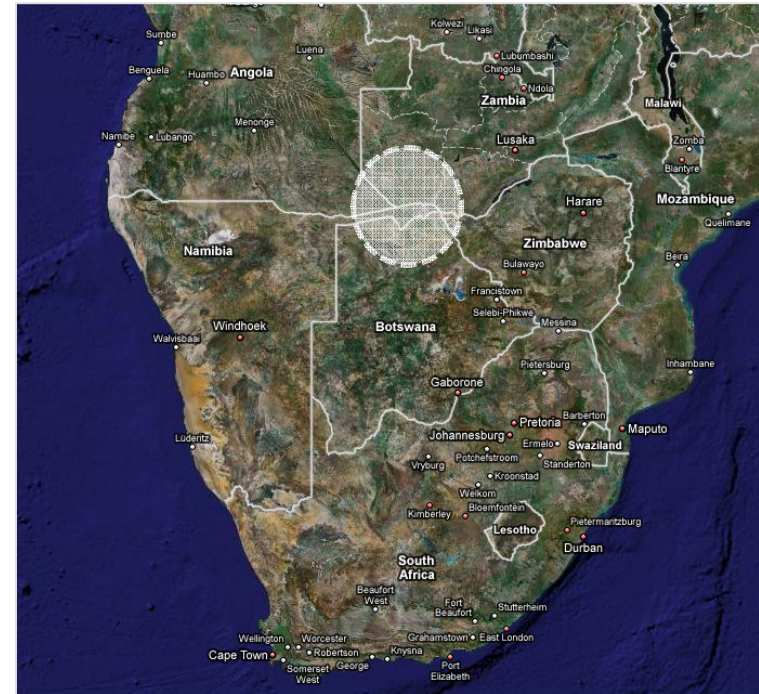
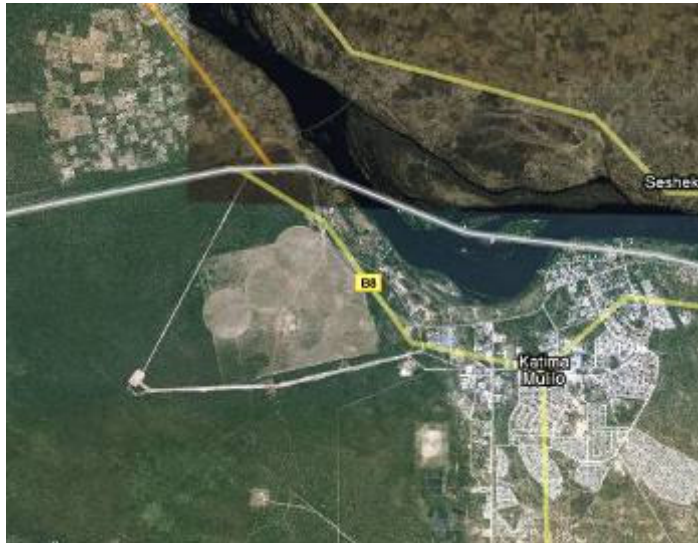
- 1. Creating sustainable and profitable agricultural food & Oil production.**
- 2. Reducing dependence on imported food.**
- 3. Employment creation for the rural community through agriculture for at least 20,000 directly or indirectly.**
- 4. Introducing modern methods of agriculture and a variety of food & oil Production.**



## 3.1 Project Location: Katima-Mulilo



LEVIEV  
... LGC ...  
GROUP OF COMPANIES



1. We have secured with the community 300,000 Ha in a holding trust.
2. We are in negotiations to secure 300 million m<sup>3</sup> of water from the ZUMBEZI river.
3. We have a natural channel to bring the water to all the locations.

## 3.1.2 Food factory



**The project is located in an old Air Port Army Base:**

- We have many facilities for a factory
- We have 116 rooms for workers



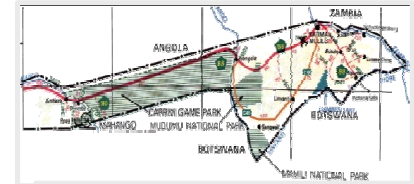
## 3.2 Why Namibia? Why the caprivi?



LEVIEV  
... LGC ...  
GROUP OF COMPANIES

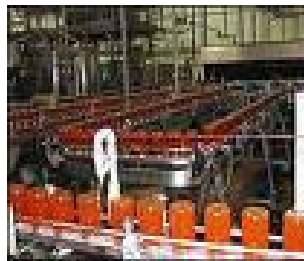
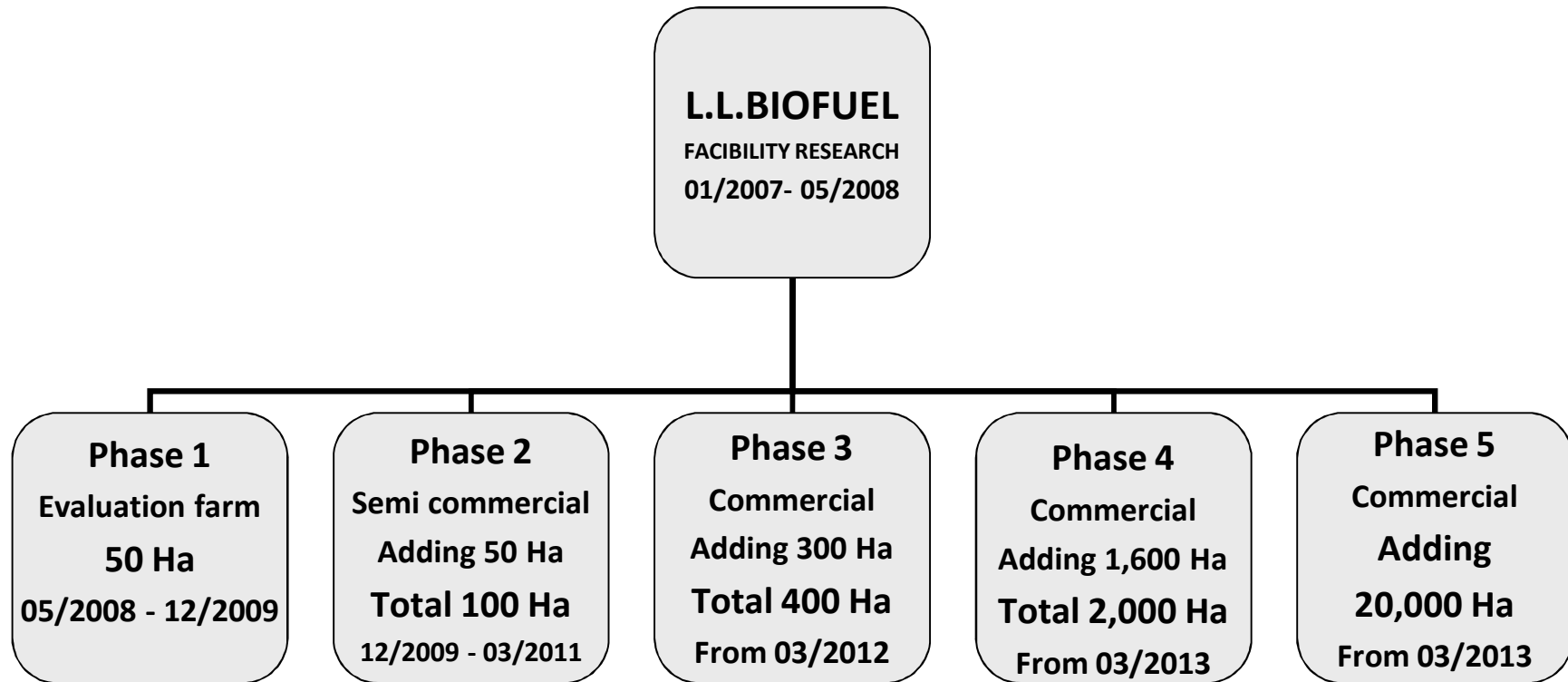
### Agriculture in the Caprivi, Namibia

1. Stable government
2. Secured business environment
3. Big rivers – annual water supply
4. Annual comfortable weather for agriculture
5. Labor available – 60% unemployment in Namibia
6. Only 1% of the land is used for agriculture
7. No competition – only few small farmers
8. Namibia import 70% - 90% of the food consumption
9. Big export opportunities for neighbors countries
10. 300,000 customers in 500 km radius
11. 3,000,000 customers in 1500 km radius



**CAPRIVI**

# 4 Project Phases & Schedule



## 4.1 Phases: Field crops



Crops	Phase 1	Phase 2	Phase 3	Phase 4	Phase 5
Onion	5	15	100	500	0
Potato	5	15	100	500	0
Maize	1	2.5	40	200	4,000
Cabbage	6	5	25	125	0
Banana	1.25	5	25	125	0
Jatropha	15	15	15	75	2,000
Castor	0	2.5	15	75	2,000
Tomato	5	5	10	50	0
Pepper	5	5	10	50	0
Sweet potato	1.25	5	10	50	0
Apples	0	2.5	5	25	0
Oranges	0	2.5	5	25	0
Sweet melon	1.25	2.5	5	25	0
Water melon	1.25	2.5	5	25	0
Carrot	2	2.5	5	25	0
Lettuce	2	2.5	5	25	0
Cucumber	0	2.5	5	25	0
Wheat	0	2.5	5	25	4,000
millet	0	2.5	5	25	4000
Leguminous	0	2.5	5	25	4,000
<b>Total</b>	<b>50 Ha</b>	<b>100 Ha</b>	<b>400 Ha</b>	<b>2,000 Ha</b>	<b>20,000 Ha</b>



## Phase 1 – Evaluation Farm:



### Agricultural Research (Trials) on 50 hectares:

1. Identify best types suitable for the Caprivi region.
2. Identify best agro-technical treatments.
3. Identify the best variety of crops for the caprivi.
4. Identify types of diseases and pest control.
5. Create local high skills labors and management.
6. Identify the customers and the markets.



## 4.1.2 Phase 1 50 Ha Today:

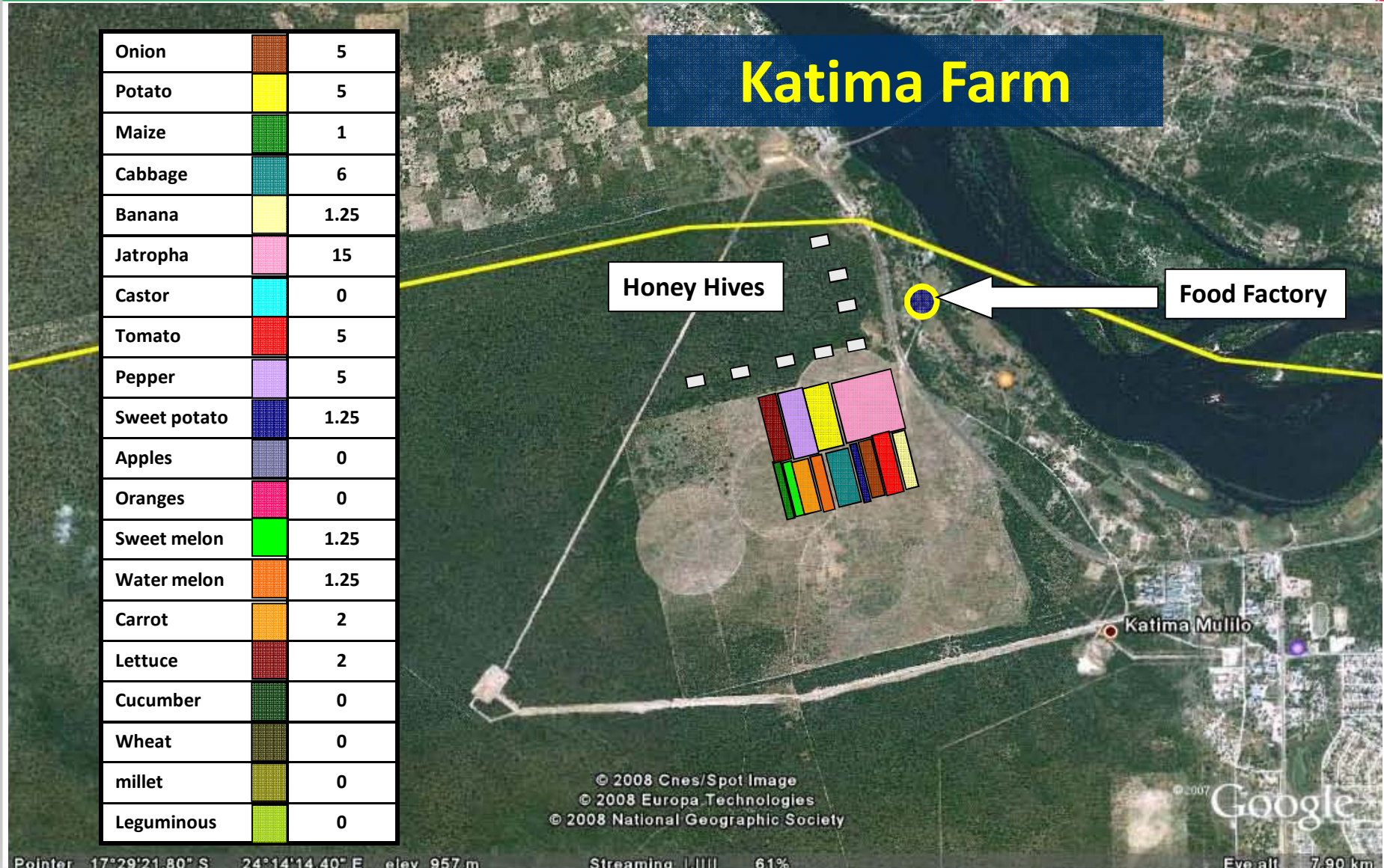


Onion		5
Potato		5
Maize		1
Cabbage		6
Banana		1.25
Jatropha		15
Castor		0
Tomato		5
Pepper		5
Sweet potato		1.25
Apples		0
Oranges		0
Sweet melon		1.25
Water melon		1.25
Carrot		2
Lettuce		2
Cucumber		0
Wheat		0
millet		0
Leguminous		0

### Katima Farm

Honey Hives

Food Factory

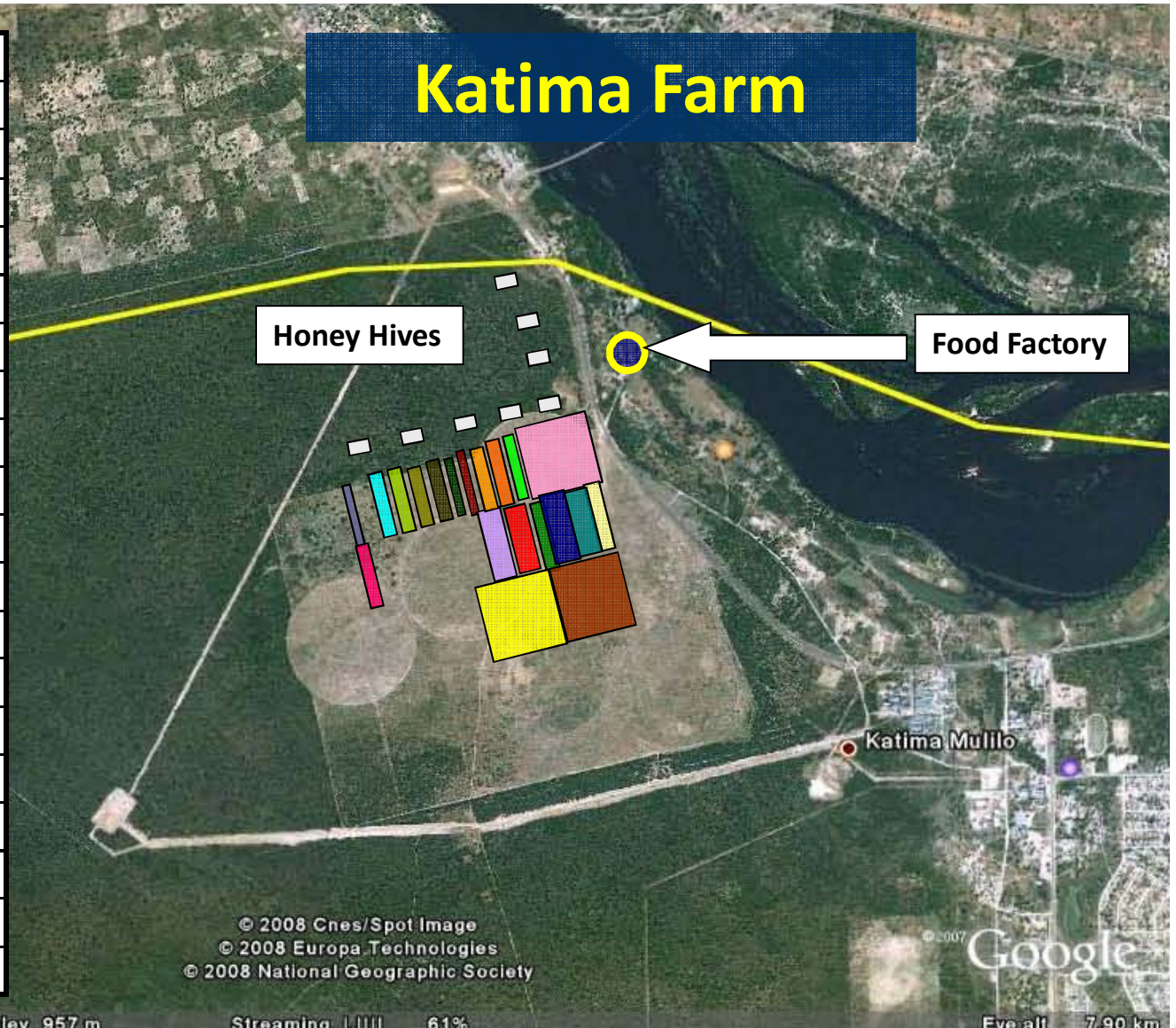


# 4.2 Phase 2 100 Ha



Onion		15
Potato		15
Maize		2.5
Cabbage		5
Banana		2.5
Jatropha		15
Castor		2.5
Tomato		5
Pepper		5
Sweet potato		5
Apples		2.5
Oranges		2.5
Sweet melon		2.5
Water melon		2.5
Carrot		2.5
Lettuce		2.5
Cucumber		2.5
Wheat		2.5
millet		2.5
Leguminous		2.5

## Katima Farm



© 2008 Cnes/Spot Image  
© 2008 Europa Technologies  
© 2008 National Geographic Society

Google

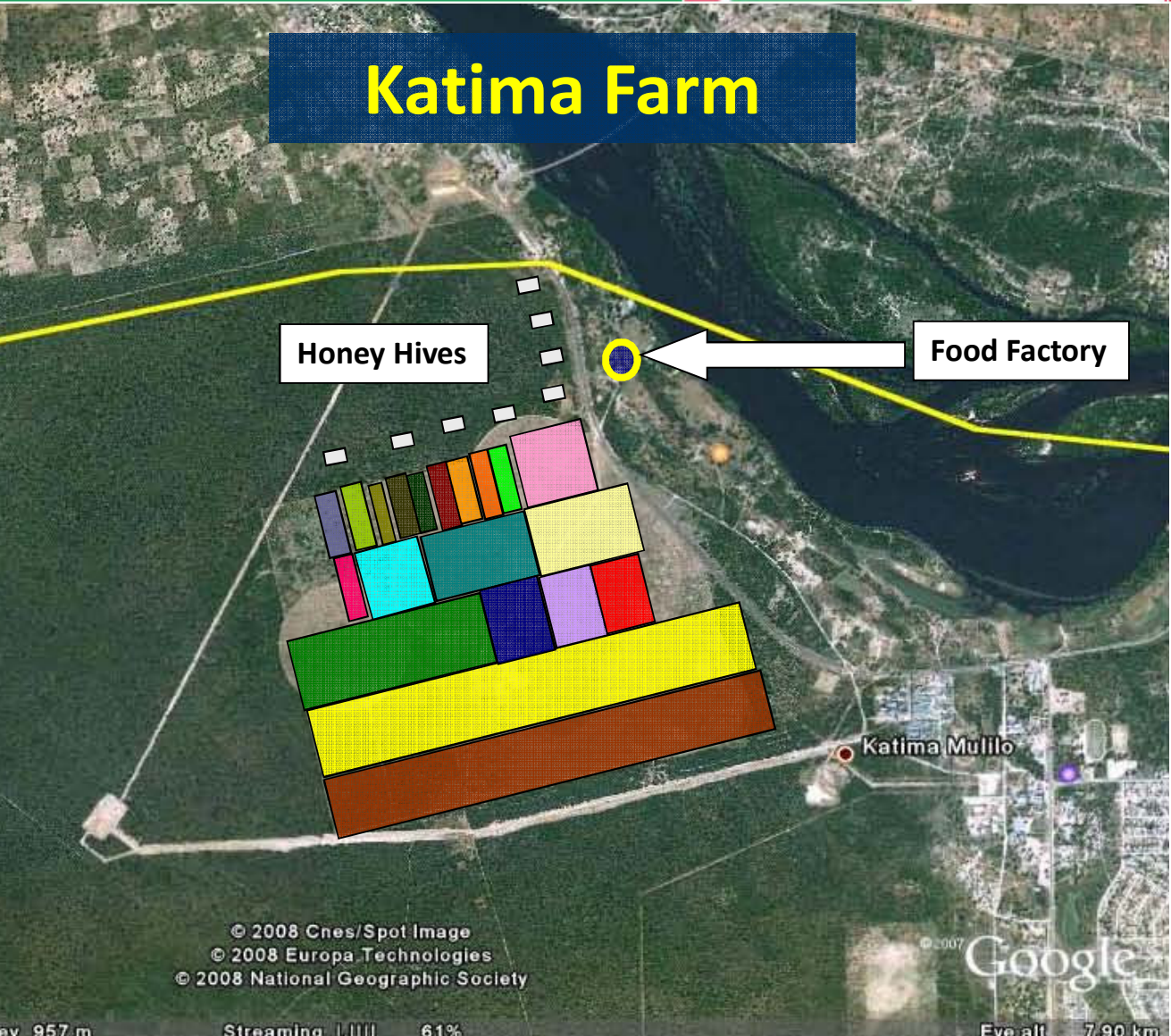


# 4.3 Phase 3 400 Ha



Onion		100
Potato		100
Maize		40
Cabbage		25
Banana		25
Jatropha		15
Castor		15
Tomato		10
Pepper		10
Sweet potato		10
Apples		5
Oranges		5
Sweet melon		5
Water melon		5
Carrot		5
Lettuce		5
Cucumber		5
Wheat		5
millet		5
Leguminous		5

## Katima Farm

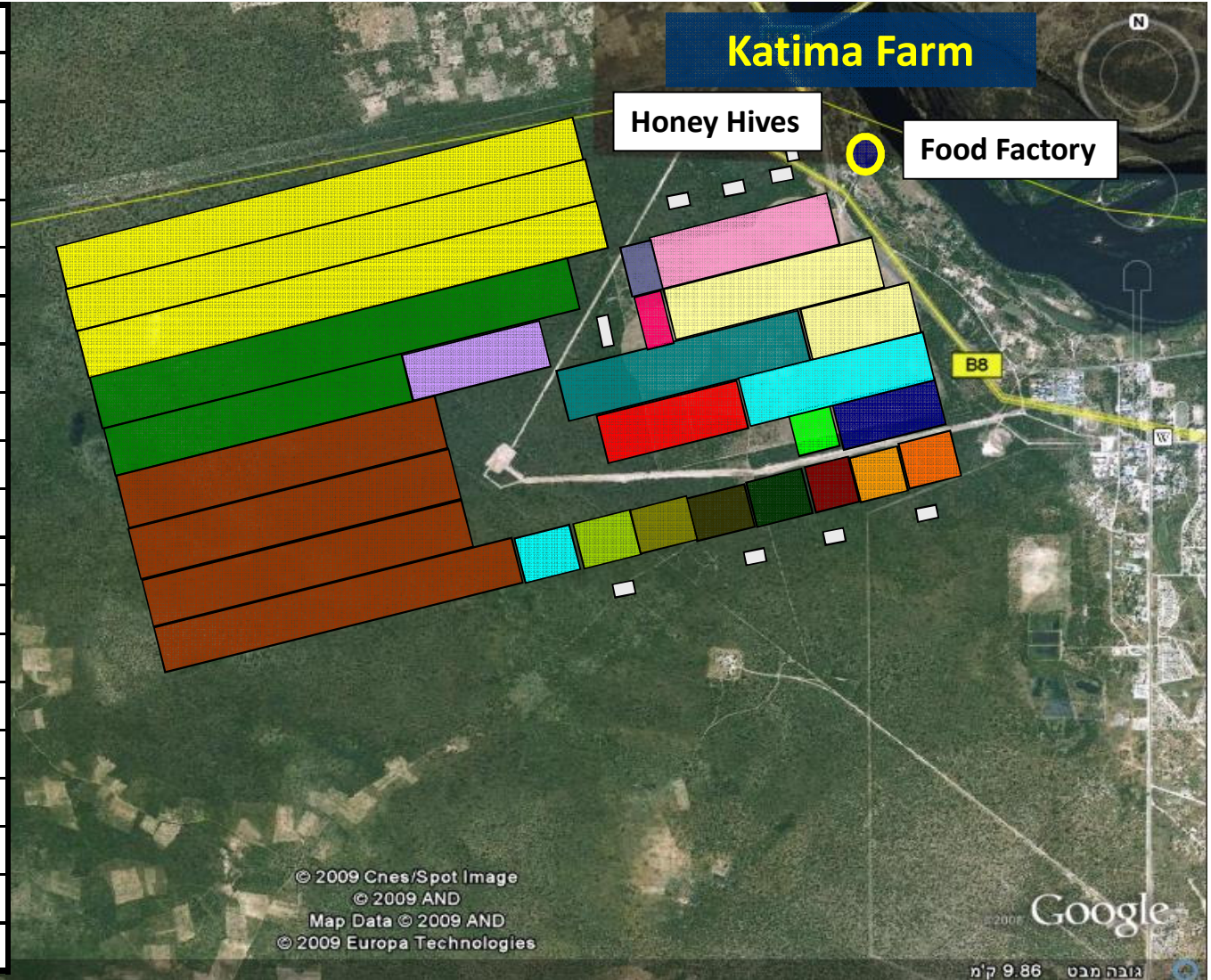


© 2008 Cnes/Spot Image  
© 2008 Europa Technologies  
© 2008 National Geographic Society

# 4.4 Phase 4 2,000 Ha



Onion		500
Potato		500
Maize		200
Cabbage		125
Banana		125
Jatropha		75
Castor		75
Tomato		50
Pepper		50
Sweet potato		50
Apples		25
Oranges		25
Sweet melon		25
Water melon		25
Carrot		25
Lettuce		25
Cucumber		25
Wheat		25
millet		25
Leguminous		25



## 4.5 Phase 5 20,000 – 300 K Ha



### Large Scale Production up to 300 K Hectares

Replications of 20,000 hectares plots in different regions of the country including Caprivi until 300,000 hectares.



Maize (sweet + grains)	4,000
Wheat	4,000
Leguminous	4,000
millet	4,000
Jatropha	2,000
Castor	2,000
Total	20,000

## 5.1 Phase 1: Infrastructure Summary



<b>Feasibility studies</b>	<b>\$300,000</b>
<b>Irrigation</b>	<b>\$360,000</b>
<b>Facilities</b>	<b>\$50,000</b>
<b>Agriculture machines</b>	<b>\$200,000</b>
<b>Agriculture Materials</b>	<b>\$50,000</b>
<b>Total</b>	<b>\$960,000</b>

## 5.2 Phase 1 50 Ha CAPEX & OPEX



Total CAPEX 50 Ha	
Details	Investments
Infrastructure	\$0 (already done )
Green houses	158,960
Fish farm	0
Pork farm	10,000
Machinery	332,925
Irrigation	76,125
<b>Total CAPEX</b>	<b>578,010</b>

Total OPEX 50 Ha 1 Month	
Details	Investments
salaries	16,660
expenses	16,035
growing expenses	34,249
<b>Total OPEX 1 Month</b>	<b>66,944</b>

## 5.3 Phase 1 50 Ha Cash Flow



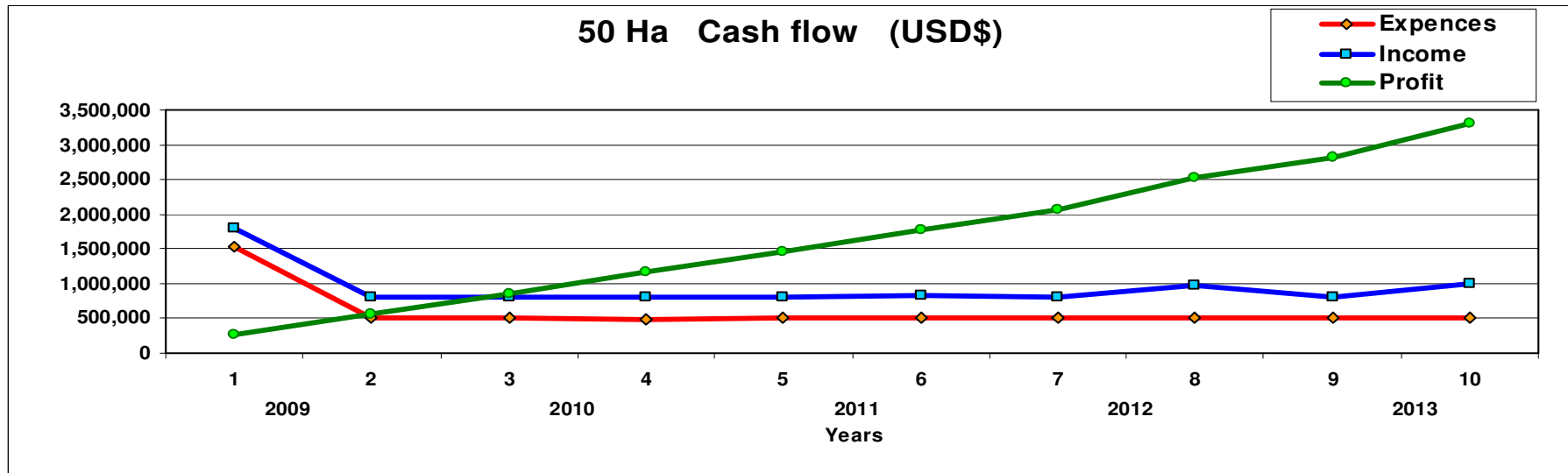
Phase 1 (50 Ha) Cash flow table \$

Year	1		2		3		4		5	
	2009	2009	2010	2010	2011	2011	2010	2010	2011	2011
Half	1	2	1	2	1	2	1	2	1	2
Balance of loan. End of period	540,000	480,000	420,000	360,000	300,000	240,000	180,000	120,000	60,000	0
Loans begin of period	1,000,000	0	0	0	0	0	0	0	0	0
Capex + contingency	578,010									
Opex	408,657	404,557	404,672	406,672	411,820	420,245	431,706	442,256	433,005	440,225
Income	796,200	796,200	796,200	796,200	796,200	826,200	796,200	976,200	796,200	988,200
Principals loan repayment	400,000	0	0	0	0	0	0	0	0	0
Principals on Capex	60,000	60,000	60,000	60,000	60,000	60,000	60,000	60,000	60,000	60,000
Interest on loan	75,000	40,500	36,000	31,500	27,000	22,500	18,000	13,500	9,000	4,500
Balance	274,533	291,143	295,528	298,028	297,380	323,455	286,494	460,444	294,195	483,475
Farm profit	274,533	565,675	861,203	1,159,231	1,456,611	1,780,066	2,066,560	2,527,004	2,821,199	3,304,673

## 5.3 Phase 1 50 Ha Finance Analyze



Finance Analyze 50 Ha (USD\$)										
Year	1		2		3		4		5	
	2009	2009	2010	2010	2011	2011	2010	2010	2011	2011
Expenses	1,521,667	505,057	500,672	498,172	498,820	502,745	509,706	515,756	502,005	504,725
Income	1,796,200	796,200	796,200	796,200	796,200	826,200	796,200	976,200	796,200	988,200
Balance	274,533	291,143	295,528	298,028	297,380	323,455	286,494	460,444	294,195	483,475
Profit	274,533	565,675	861,203	1,159,231	1,456,611	1,780,066	2,066,560	2,527,004	2,821,199	3,304,673



## 6 Marketing plan



➤ **DOMESTIC CONSUMPTION**

➤ **EXPORT TO NEIGHBOURING COUNTRIES:**

**ANGOLA, BOTSWANA, ZAMBIA, ZIMBABWE, DRC, S.A**

➤ **EXPORT TO USA , EUROPE**

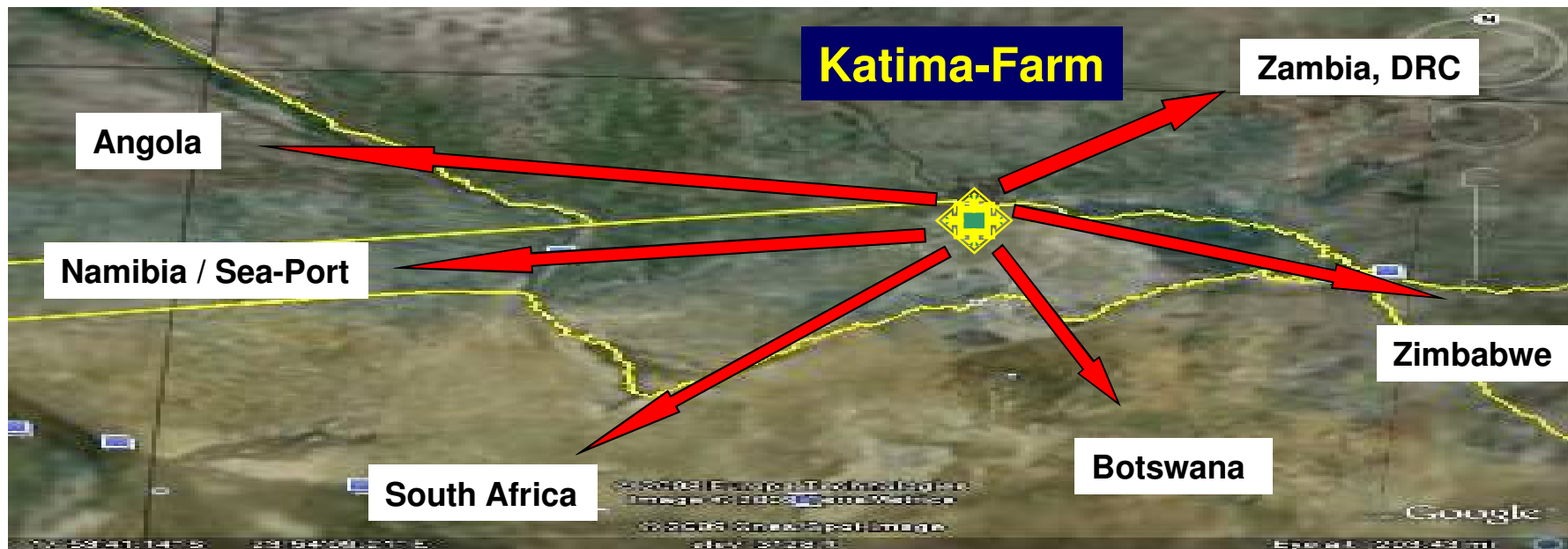
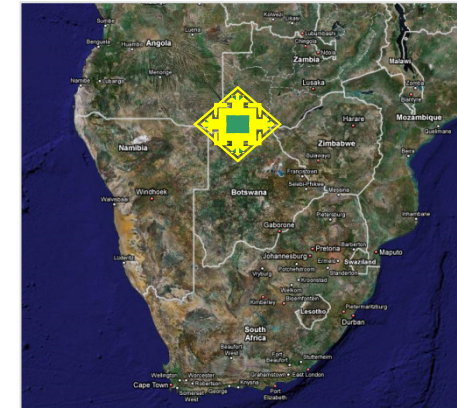


## 6.1 Marketing: Food customers



LEVIEV  
... LGC ...  
GROUP OF COMPANIES

- 30,000 Consumers in Katima-Mulilo
- 6 Countries to export
- 300,000 consumers in 500 km radius
- 3,000,000 consumers in 1500 km radius



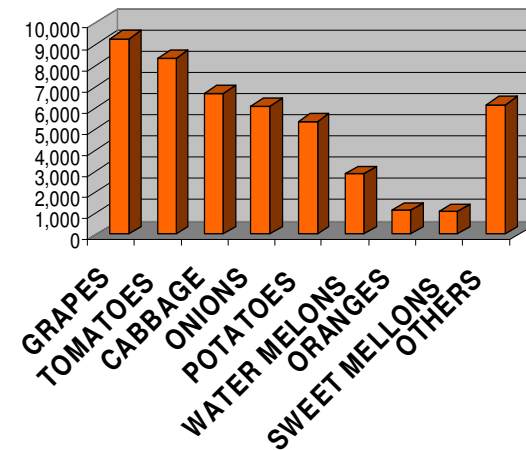
## 6.2 Namibia market 2007/8



1. Total production    **46,436 tons**
2. Total Import        **87,000 tons**
3. Total export        **25,301 tons**

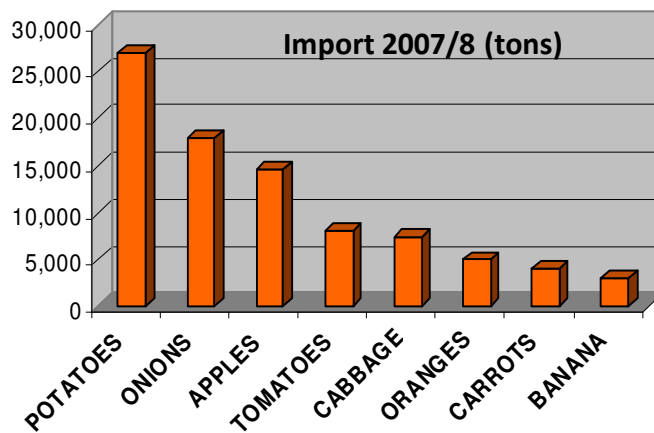
1

Local production 2008 (tons)



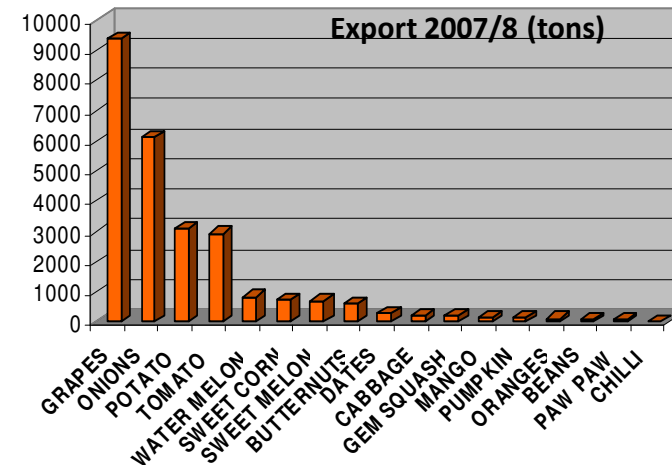
2

Import 2007/8 (tons)



3

Export 2007/8 (tons)



## 7.1 Benefits To Namibia: Political



LEVIEV  
... LGC ...  
GROUP OF COMPANIES

1. Food independency
2. High-Tech Agricultural production
3. Become a leader in the African agriculture arena
4. Strengthen the Trade relations with the world



## 7.2 Benefits To Namibia: Economical



LEVIEV  
... LGC ...  
GROUP OF COMPANIES

### 1. High Value Food Production



### 2. Oils production



### 3. Export opportunities

Neighbor countries: Angola, Zambia, Zimbabwe, Botswana

In season: South Africa

Off season: Europe, USA

## 7.3 Benefits To Namibia: Social



LEVIEV  
... LGC ...  
GROUP OF COMPANIES

### Stage 1: Evaluation farm

New **150** jobs

Create Namibian experts



### Stage 2: Upscale to Semi commercial

New **2,000** jobs

Create Namibian experts



### Stage 3-5: Commercial large scale farming

New **20,000** jobs

Create Namibian experts



## 8.1 Ecologists supporting the project



<b>Professor Pua Bar (Kutiel)</b> Israel	<b>Expert in invasive alien plants and sand dune conservation and management</b> <b>Chair of the Environmental Studies Program</b> <b>Department of Geography and Environmental Development</b> <b>Ben Gurion University ,Israel</b>
<b>Professor Elsa du Toit</b> South Africa	<b>Agronomist, Expert in weeds</b> <b>Department of Plant Protection and Soil Science, University of Pretoria, Pretoria, South Africa</b>
<b>DR. Tuvia Yaacoby</b> Israel	<b>Expert in controlling weeds and invasive alien plants</b> <b>Chief Herbologist in Israel</b> <b>Ministry of agriculture and rural development, plant protection and Inspection Services</b>
<b>DR. Jean-Marc Dufour Dror</b> France, Israel	<b>Expert in invasive plants</b> <b>Department of crops and nature resources Volcani Agriculture Institution</b> <b>Sorbonne University , France</b>

## 8.1.1 Ecologists supporting the project



<b>Professor Pua Bar (Kutiel)</b> Israel	Tel: + 972-86477164 Fax: +972-86472821 Email: <a href="mailto:kutiel@bgu.ac.il">kutiel@bgu.ac.il</a>
<b>Professor Elsa du Toit</b> South Africa	Tel: (012) 317-8216 (W) Fax: (012) 322-8570 Cell: 082-494-5133 Email: <a href="mailto:elsa.dutoit@dme.gov.za">elsa.dutoit@dme.gov.za</a>
<b>DR. Tuvia Yaacoby</b> Israel	Tel: + 972-39681525 Fax: +972-39681582 Email: <a href="mailto:tobyy@moag.gov.il">tobyy@moag.gov.il</a>
<b>DR. Jean-Marc Dufour Dror</b> France, Israel	Tel: + 972-26511865 Fax: +972-02-6523963 Email: <a href="mailto:jmdd@netvision.net.il">jmdd@netvision.net.il</a>

## 8.2 Scientist supporting the project



LEVIEV  
... LGC ...  
GROUP OF COMPANIES

### **Enhanced Biofuels & Technologies ( I) Pvt Ltd**

pioneers in the field of Biofuel production using Non edible Sources of feed stock like Jatropha and Algae. Natural Science combined with the Innovative Technology in the field of Research and Development.

#### **Biofuel Research & Development Centre**

#5/10 C Alankar Garden,

G.N.Mills Post, Coimbatore 641 029,

Tamilnadu, India

Phone: +91 422 2645660 , 2645630

FAX: +91 422 2645640

[info@ebtiplc.com](mailto:info@ebtiplc.com)

### **Agroproject:**

multidisciplinary professionals with training and skills gained in Israel, the USA and a multitude of project locations around the world.

Team experience spans the range of agricultural sectors, different climatic conditions, multiple cultures and evolving economic environments

#### **AGRO-PROJECTS DEV. (N.Y.) L.P**

Yakum 60972, Israel

Tel: +972-9-9524181

Fax: +972-9-9524190

[www.agroproject.co.il](http://www.agroproject.co.il)



# L.L.Biofuels Namibia

## Food production & Oil crops



LEVIEV  
... LGC ...  
GROUP OF COMPANIES



**We are looking for win-win partnerships**

**Thank you**

*The Leviev Group of Companies*

**L.L.BIOFUEL**

**Tel: +264-61386100**

**Fax: +264-61249253**

**P.O. Box 3498**

**7 Ruhr Street**

**Northern Industrial**

**Windhoek, Namibia**

**Ricky Lilami**

**[rickylilami@gmail.com](mailto:rickylilami@gmail.com)**

